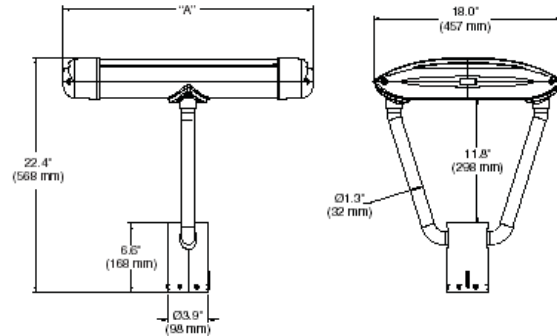


LEDWAY Street - Mounting F POST TOP for 70mm out dia poles/spigots



Code	Light bars	Nominal Power	System wattage	Initial delivered Lm	"A"
LYS##F04B*	2	40W	55	3.400	400mm
LYS##F06B*	3	60W	79	5.100	450mm
LYS##F08B*	4	80W	104	6.800	400mm
LYS##F10B*	5	100W	128	8.500	450mm
LYS##F12B*	6	120W	153	10.200	501mm
LYS##F14B*	7	140W	183	11.900	552mm
LYS##F16B*	8	160W	207	13.600	603mm
LYS##F18B*	9	180W	232	15.300	654mm
LYS##F20B*	10	200W	257	17.000	705mm
LYS##F22B*	11	220W	281	18.700	756mm
LYS##F24B*	12	240W	306	20.400	806mm

##=optic *=colour

Die cast aluminium body with slim design for minimum wind load requirements, internal electrical compartment IP66 rated with easy access, replacement device for driver and single light bars. Air Flow thermal management system conceived for diods highest efficiency and long durability, with self cleaning upper cover in perforated aluminium. Exclusive Colorfast Deltaguard® finish features an E-Coat epoxy primer with an ultra-durable polyester powder topcoat, providing excellent resistance to corrosion, ultraviolet degradation and abrasion. 10 years limited warranty on the finish.

Light bar module made of 20 LED's, Class 1 (EN60825) with 6.000°K colour temperature and minimum 75 CRI, available on request with colour temperature 4.300°K and 3.500°K. Internal electrical circuit board, support and heat dissipation body in extruded aluminium, internal gasketing system designed according to lenses geometry, light bar rated IP66. High precision and high performance lenses with NanoOptic® patented design with multiple photometric distributions. 350mA CC internal system with high durability IP66 rated driver. 2 level system option (G) with 50% total power reduction and 35% luminous flux reduction.

Fixed Post Top mounting with aluminium yoke and cast aluminium hub with 8 hex fixing screws. For poles/spigots with OD 60-76mm.

Five year limited warranty on fixture. Insulation Class 2. Power factor 90%. Rated IP66. EN60598-1 compliant. Operating temperature from -40°C to +55°C. Minimum life expectancy 100.000 hrs at Ta = 15°C. 10% Lumen depreciation after 50.000 hrs. 120V-277V 50/60Hz power entry.

Accessories:

- RL-BRDSPK: Bird Spikes

Colours

Standard Finish



Silver



Black



White



ECO LIGHT

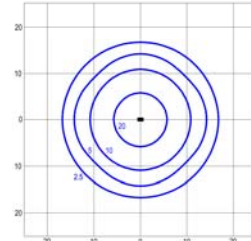
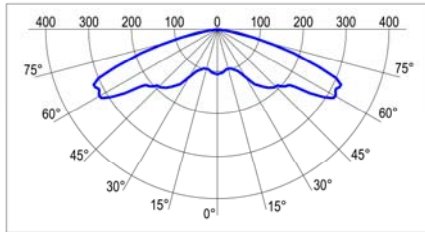
Ledway Street. EPA Calculation

bars	2	3	4	5	6	7	8	9	10	11	12
Post Top fixture	0,10	0,10	0,10	0,10	0,10	0,10	0,10	0,10	0,11	0,11	0,12

Photometries

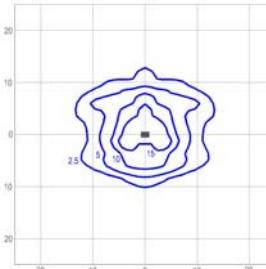
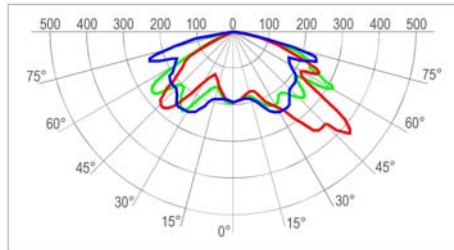
Polar curves refer to actual photometric tests by independent laboratories. For lighting calculations and layouts refer to Initial delivered lumens chart and use Light Loss Factor equal to 0,95

QV Optic



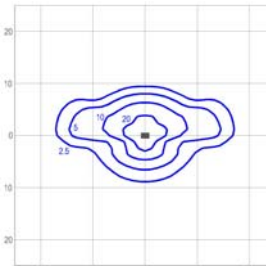
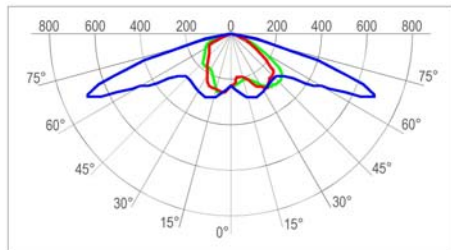
Isolux plot of 1 fixture with 6 light bars (120W nominal) installed at 6mt height

PR Optic



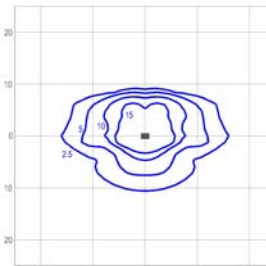
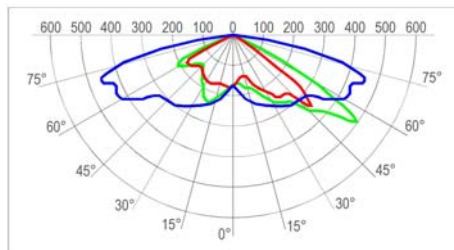
Isolux plot of 1 fixture with 3 light bars (60W nominal) installed at 6mt height.

TL Optic



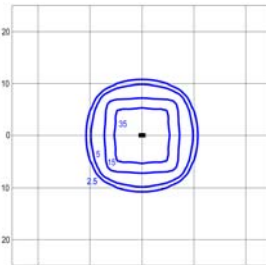
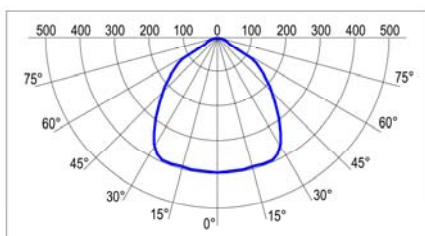
Isolux plot of 1 fixture with 3 light bars (60W nominal) installed at 6mt height.

TS Optic



Isolux plot of 1 fixture with 3 light bars (60W nominal) installed at 6mt height..

FS Optic



Isolux plot of 1 fixture with 6 light bars (120W nominal) installed at 6mt height.